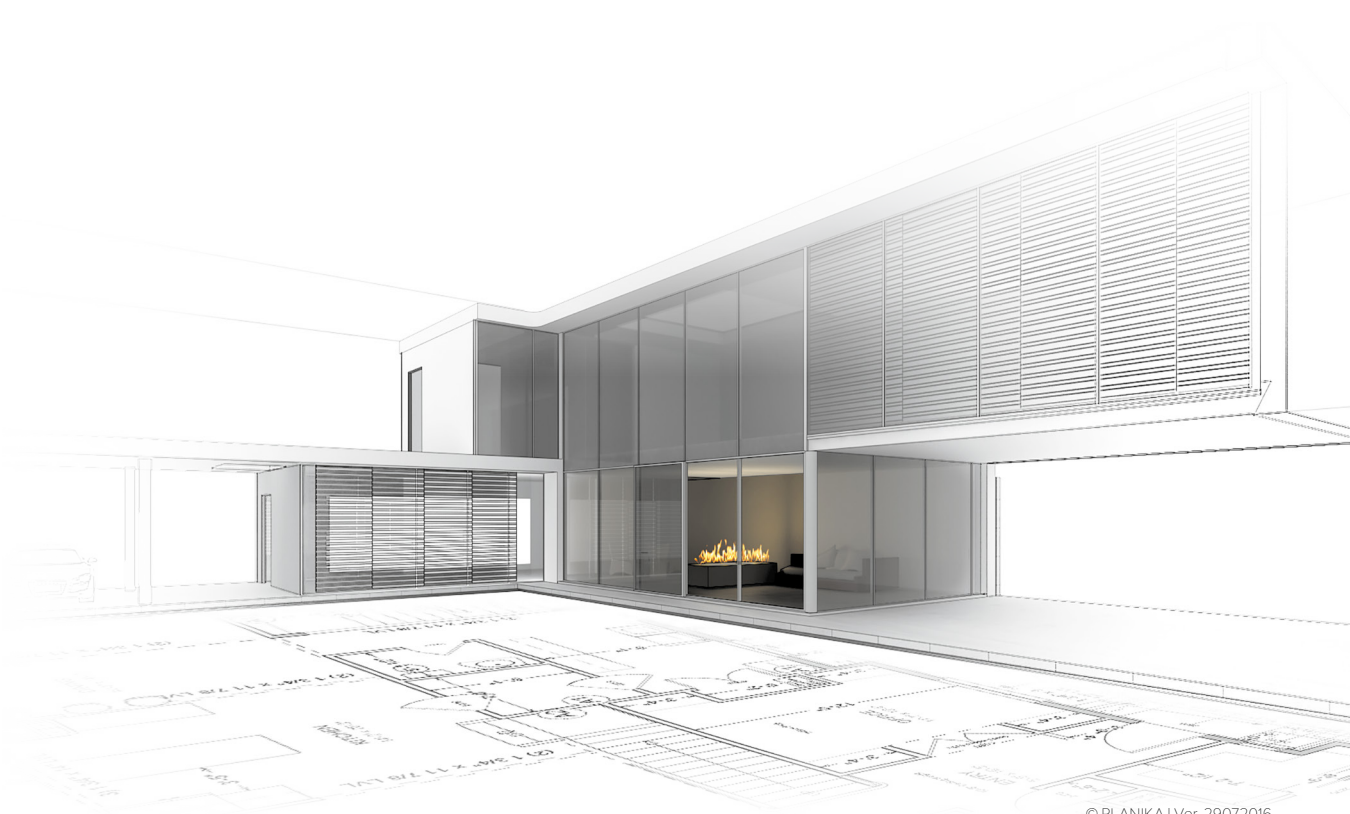


kitchen

intelligent fire



© PLANIKA | Ver. 29072016

Chili Fire kitchen

Chili Fire

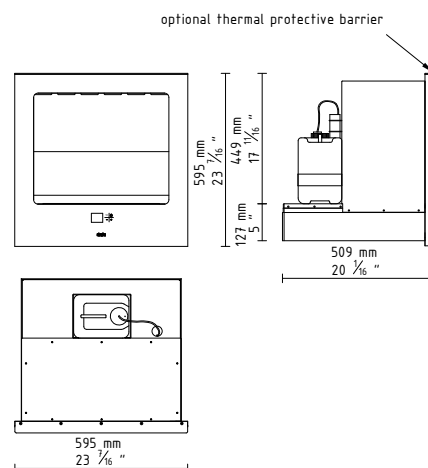
Spice up your kitchen
Compact fireplace for any dining space

FEATURES:

- BEV* Technology
- External fuel tank
- No smell / no ash / no smoke
- WiFi (controlled with mobile devices)
- Remote controllable
- Smart Home Systems compatible
- Advanced safety sensors
- Fast Start
- Automatic shutdown in case of errors
- Child Lock
- Sleep timer
- Advanced microprocessor
- LCD display
- Touch screen control panel
- Intuitive control
- 6 levels of flame height
- Easy installation
- No additional installation
- No chimney required
- External wireless temperature sensor
- Electrical connection required
- For indoor use
- Eco-friendly
- Certified



DIMENSIONS:



* BEV Technology – A patented process resulting in the clean burning of bio-ethanol fuel vapours.

TECHNICAL DATA:

Capacity: 4,5 L / [US] 1,19 gal / [UK] 0,99 gal

Burning time: 6 - 11 h

Heat output: 2,2 - 3,9 kW / 7506 - 13307 BTU

Net weight: 31 kg / 68 lbs

Air circulation: min. 1/h

Minimum room size:
please contact our Project Department for details

Power supply: 230 V / 115 V

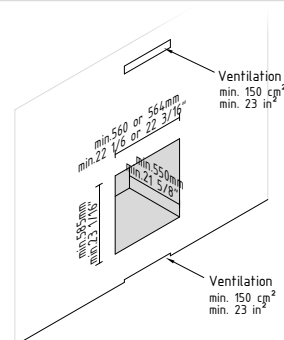
Finish:

TOP: black powder coated steel,

CASING: tempered glass (black painted, high gloss), black powder coated steel,

GLASS SHIELD: tempered glass

INSTALLATION:



Chili Fire kitchen

Chili Fire

INDOOR INSTALLATION REQUIREMENTS:



download **PRODUCT INSTRUCTION**