

cerasonar
for music lovers...



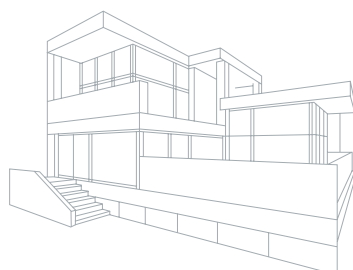
Invisible loudspeakers

architecture
living
life
music
... no compromise

Invisible loudspeakers, while the architecture keeps design and function, enriched by music simply present in the room, emerging from nowhere.

As a result, no speaker is visible anymore. Ideally, the speaker is installed in a suspended ceiling or facing formwork. The installation is similar to a dry construction board. At the end the purity of the architecture is retained and enjoying music creates a good mood.

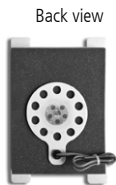
With our invisible speakers we would like to re-define the standard for the smart home of today and tomorrow. Just as the outlets for luminaires, the speaker becomes part of the home technology and subordinates to the ceiling pattern completely as it does not manifest itself visually.



Easy installation in plasterboard and solid construction

cerasonar

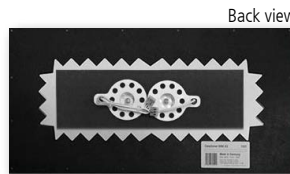
Invisible loudspeakers



cerasonar 1520x1



cerasonar 3060x1



cerasonar 3060x2



cerasonar 4062x2 hp

Power rating:	25 W * (50 W **)	25 W * (50 W **)	50 W * (100 W **) / 2 x 25 W *	50 W * (100 W **) / 2 x 25 W *
Impedance:	8 Ohm	8 Ohm	4 Ohm / 2 x 8 Ohm	4 Ohm / 2 x 8 Ohm
Drivers:	1 Exciter	1 Exciter	2 Exciter	2 Exciter
Frequency range:	100 - 18.000 Hz *	80 - 18.000 Hz *	80 - 18.000 Hz *	70 - 18.000 Hz *
Dispersion range:	180° x 180°	180° x 180°	180° x 180°	180° x 180°
Sensitivity:	81 dB 1 W/1 m	81 dB 1 W/1 m	83 dB 1 W/1 m	90 dB 1 W/1 m
Dimensions:	15 x 22,5 x 5,6 cm	30 x 60 x 5,6 cm	30 x 60 x 5,6 cm	40 x 62,5 x 5,6 cm
Wall Construction:	only plasterboard 12,5 mm	plasterboard 12,5 mm / solidwall	plasterboard 12,5 mm / solidwall	only plasterboard 12,5 mm
Alcove depth:	-	12,8 cm with mountingframe	12,8 cm with mountingframe	-
Weight:	0,4 Kg	1,5 Kg	1,6 Kg	1,8 Kg

Application

* Power rating as per application of a high-pass filter. No electronic low-frequency boost must be used. Resulting damage from mechanical overload is excluded from the warranty.

** Max. pulse power rating. Operated via electronic high-pass filters of an AV receiver (min. 150 Hz / 12 dB)

Multiroom:	*****	*****	*****	*****
Surround:	*****	*****	*****	*****
Conference:	*****	*****	*****	*****
Museums:	*****	*****	*****	*****
Hotel, SPA:	*****	*****	*****	*****
Stores, POS:	*****	*****	*****	*****

Mini-sized sound panel for room sizes of 1-20 square meters. Ideal for retrofitting as multiroom or surround speaker. Qualified for single-ply dry walls and suspended ceilings. Ideal size of the installation location requires min. 60 x 60 cm of clearance to the adjacent profiles of the substructure. In full-range mode this allows for a full frequency response.

Small-sized sound panel for room sizes of 5-30 square meters. Ideal for multiroom or surround applications. Qualified for dry walls and ceilings with a substructure spacing of 62.5 cm and a depth of 6 cm.

Small-sized sound panel for room sizes of 5-30 square meters. Ideal for multiroom or surround applications. Also useable in single-stereo speaker mode. Qualified for dry walls and ceilings with a substructure spacing of 62.5 cm and a depth of 6 cm.

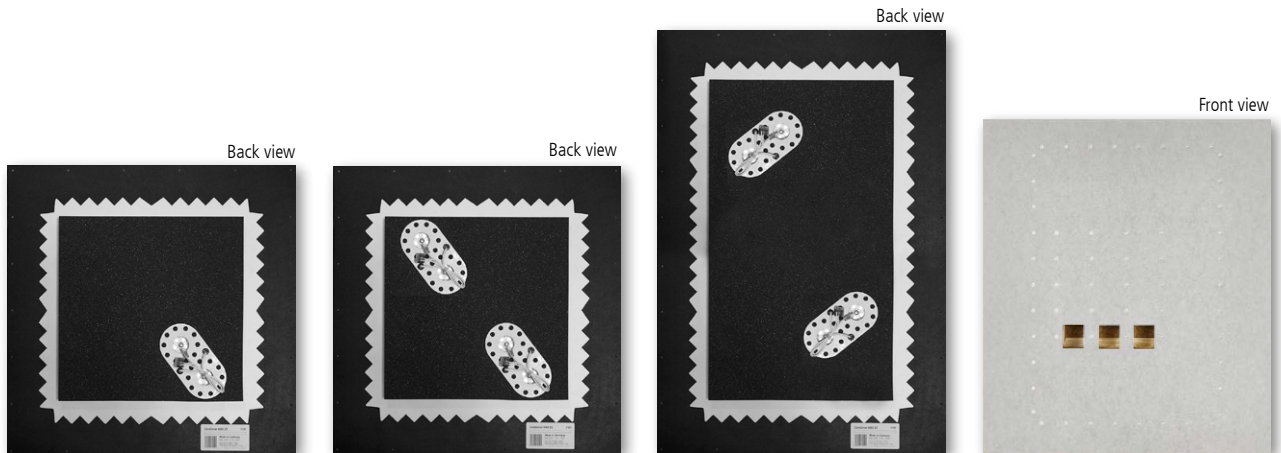
Single-Stereo - This invisible-speaker can also be configured in single stereo mode (both channels of a panel).

High-Performance Soundpanel for room sizes of 20-60 square meters. Ideal for multiroom or surround applications. Also useable in single-stereo speaker mode. Qualified for dry walls and suspended ceilings with a substructure spacing of 62.5 cm or 40 cm

Single-Stereo - This invisible-speaker can also be configured in single stereo mode (both channels of a panel).



Easy installation in plasterboard and solid construction



cerasonar 6060x2

cerasonar 6060x4

cerasonar 9060x4

cerasonar 6560x4 sub

Power rating:	50 W * (100 W **) / 2 x 25 W *	100 W * (200 W **) / 2 x 50 W *	100 W * (200 W **) / 2 x 50 W *	200 Watt
Impedance:	4 Ohm / 2 x 8 Ohm	8 Ohm / 2 x 4 Ohm	8 Ohm / 2 x 4 Ohm	8 Ohm
Drivers:	2 Exciter	4 Exciter	4 Exciter	4 Woofer
Frequency range:	60 - 18.000 Hz *	60 - 18.000 Hz *	50 - 18.000 Hz *	40 - 200 Hz
Dispersion range:	180° x 180°	180° x 180°	180° x 180°	hemispherical
Sensitivity:	84 dB 1 W/1 m	85 dB 1 W/1 m	85 dB 1 W/1 m	84 dB 1 W/1 m
Dimensions:	60 x 60 x 5,6 cm	60 x 60 x 5,6 cm	90 x 60 x 5,6 cm	65 x 60 x 10,5 cm
Wall Construction:	plasterboard 12,5mm / solidwall	plasterboard 12,5mm / solidwall	plasterboard 12,5mm / solidwall	plasterboard 12,5mm / solidwall
Alcove depth:	12,8 cm with mountingframe	12,8 cm with mountingframe	12,8 cm with mountingframe	14 cm with mountingframe
Weight:	2,0 Kg	2,2 Kg	3,2 Kg	7,0 Kg

Application

* Power rating as per application of a high-pass filter. No electronic low-frequency boost must be used. Resulting damage from mechanical overload are excluded from the warranty.

** Max. pulse power rating. Operated via electronic high-pass filters of an AV receiver (min. 150 Hz / 12 dB)

Multiroom:	*****	*****	*****	*****
Surround:	*****	*****	*****	*****
Conference:	*****	*****	*****	*****
Museums:	*****	*****	*****	*****
Hotel, SPA:	*****	*****	*****	*****
Stores, POS:	*****	*****	*****	*****

Standard sound panel for room sizes of 20-60 square meters. Ideal for multiroom or surround applications. Also useable in single-stereo speaker mode. Qualified for dry walls and suspended ceilings with a substructure spacing of 62.5 cm and a depth of 6 cm.

Single-Stereo - This invisible-speaker can also be configured in single stereo mode (both channels of a panel).

Standard sound panel with high load-capacity for room sizes of 20-60 square meters. Ideal for multiroom or surround applications. Also useable in single-stereo speaker mode. Qualified for dry walls and suspended ceilings with a substructure spacing of 62.5 cm and a depth of 6 cm.

Single-Stereo - This invisible-speaker can also be configured in single stereo mode (both channels of a panel).

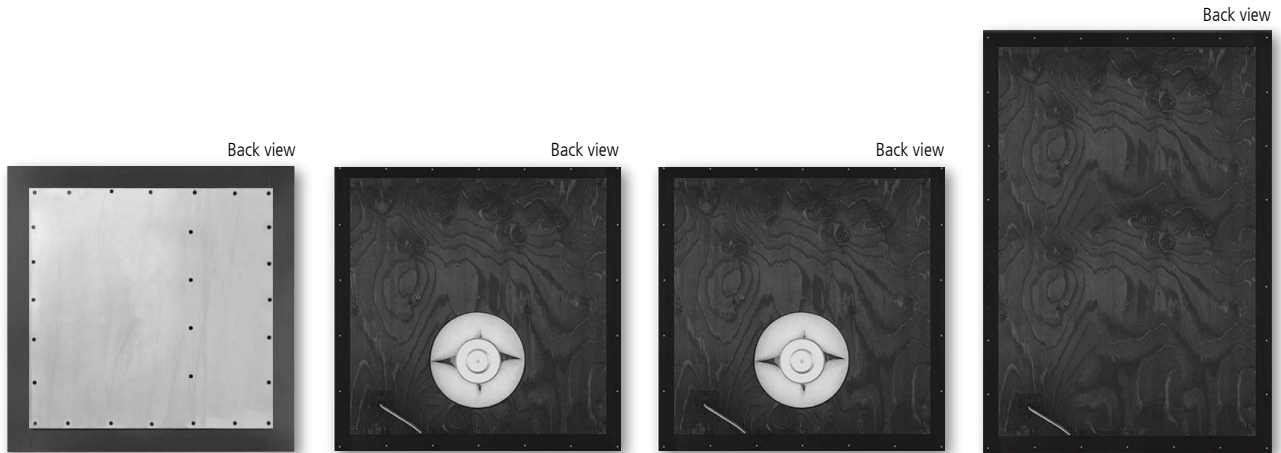
Large-sized sound panel with higher load-capacity for room sizes of 20-60 square meters. Ideal for multiroom or surround applications. Also useable in single-stereo speaker mode. Qualified for dry walls and suspended ceilings with a substructure spacing of 62.5 cm and a depth of 6 cm. Installation in solid walls and ceilings possible with the use of the optional mounting frame.

Single-Stereo - This invisible-speaker can also be configured in single stereo mode (both channels of a panel).

Subwoofer to combine with all cerasonar sound panels. Qualified for wet and dry masonry walls with a substructure spacing of 62.5 cm and inside depth of 10 cm. The use of high-pass filters with the full-range panels relieve these from low frequencies in order to allow the 6560x4 sub to reproduce the bass with a higher maximum volume.

cerasonar

Fullrange and invisible subwoofer



cerasonar 6060plus

cerasonar 6060os+

cerasonar 6060sub+

cerasonar 9060sub+

Power rating:	110 Watt	120 Watt	120 W	240 Watt
Impedance:	4 Ohm	8 Ohm	8 Ohm	4 Ohm
Drivers:	1 Exciter / 2 Woofer	1 Exciter / 1 Woofer	1 Bassdriver	4 Woofer
Frequency range:	45 - 18.000 Hz	37 - 18.000 Hz	35 - 150 Hz	25 - 150 Hz
Dispersion range:	180° x 180°	180° x 180°	hemispherical	hemispherical
Sensitivity:	86 dB 1 W/1 m	86 dB 1 W/1 m	85 dB 1 W/1 m	84 dB 1 W/1 m
Dimensions:	60 x 60 x 9,9 cm	60 x 60 x 11,9 cm	60 x 60 x 11,9 cm	60 x 60 x 9,9 cm
Wall Construction:	plasterboard 12,5mm / solidwall	only plasterboard 12,5 mm	only plasterboard 12,5 mm	plasterboard 12,5mm / solidwall
Alcove depth:	12,8 cm with mountingframe	-	-	12,8 cm with mountingframe
Weight:	6,5 Kg	6,5 Kg	6,5 Kg	7,0 Kg

Application

These models from our range of invisible speakers generate more bass energy than our pure Exciter panels. Therefore, the speaker must be spackled with a flexible fine filler. We were able to document good results with the Knauf Uniflott and Ardex 828 products. **Do not install too early** – a good example to follow is the parquet layer, which starts his work only after a building moisture check with appropriate results has been carried out.

Multiroom:	*****	*****	*****	*****
Surround:	*****	*****	*****	*****
Conference:	*****	*****	*****	*****
Museums:	*****	*****	*****	*****
Hotel, SPA:	*****	*****	*****	*****
Stores, POS:	*****	*****	*****	*****

High-end sound panel for room sizes of 20-60 square meters. Ideal for multiroom or surround applications. Verso closed for improvement of sound insulation. Qualified for dry walls and suspended ceilings with a substructure spacing of 62.5 cm and a depth of 10 cm.

Installation in solid walls and ceilings possible with the use of the optional mounting frame.

High-end sound panel for room sizes of 30-80 square meters. Ideal for multiroom or surround applications. Qualified for dry walls and suspended ceilings with a substructure spacing of 62.5 cm and a depth of 11 cm.

Fully invisible Subwoofer to combine with all cerasonar sound panels. Qualified for dry masonry walls with a substructure spacing of 62.5 cm and inside depth of 11 cm. The use of high-pass filters with the full-range panels relieve these from low frequencies in order to allow the 6060sub to reproduce the bass with a higher maximum volume.

Fully invisible Subwoofer to combine with all cerasonar sound panels. Qualified for dry masonry walls with a substructure spacing of 62.5 cm and inside depth of 10 cm. The use of high-pass filters with the full-range panels relieve these from low frequencies in order to allow the 9060sub to reproduce the bass with a higher maximum volume.

Installation in solid walls possible with the use of the optional mounting frame.

living room
lounge
home cinema
kitchen
bedroom
bathroom...

Made for any environment

The extremely flat panels are designed for dry and solid walls. A new Exciter, developed and manufactured by cerasonar, ensures outstanding dynamics – indispensable for use as a full stereo or home theater system with breathtaking acoustics. Off-the-shelf hi-fi equipment and existent amplifier systems can be easily combined with cerasonar.



Invisible speakers are ideal for the kitchen

As part of the suspended ceiling or wall, vapours from cooking or braising can do it no harm. The even dispersion always provides a perfect sound for the hobby chefs despite permanently moving between the different points of preparation.



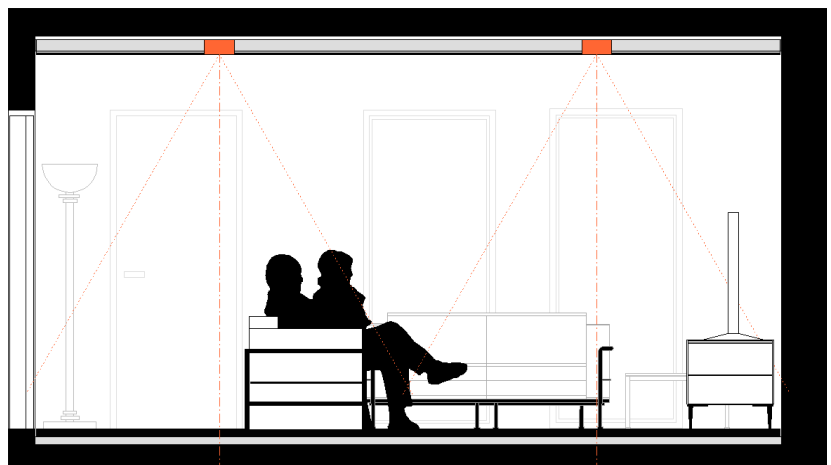
cerasonar 1520x1

Installed in a few minutes, also as retrofitted Installation.



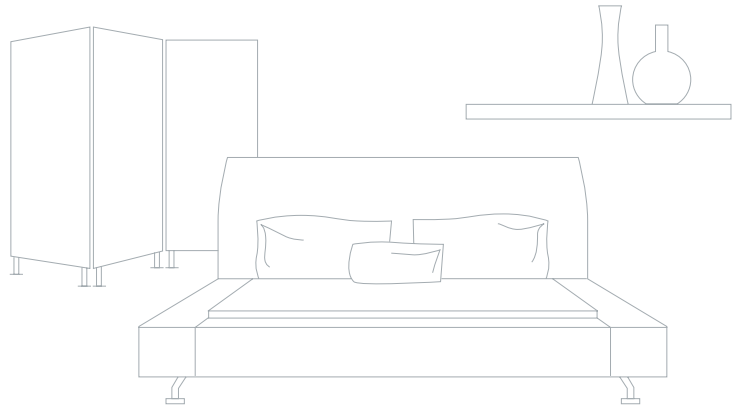
Tips for installation

If the speakers can be integrated in a suspended ceiling, this is the ideal place for multiroom sonication. Thus, you create for years the possibility for flexible floor plan design. For example, you can change positioning of paintings or cupboards without concealing any speakers. The second advantage of a suspended ceiling is the integration of lighting, in conjunction with the subsequent possibility of changes. The third advantage is the capability to improve the room acoustics. In particular minimally furnished rooms benefit a lot from such a measure.



Source: www.architektur-lautsprecher.de

invisible loudspeakers for furniture construction



At Ceratec Audio Design, we are professionals and a reference partner for loudspeaker concepts that are to be integrated in furniture, ceilings and wall panellings. The completely invisible reproduction of sound out of the surface of a furniture piece can be realized in high quality. Our know-how already has successfully been applied by various furniture and design manufacturers.



Videosample <http://cerasonar.de/furniture>



cerasonar

Invisible sound custom made



Invisible loudspeakers for
shipbuilding and lightweight
constructions



Maritime life requires loudspeaker solutions, which can be integrated into the interior in the best space-saving way possible. Low weight and low volume requirements are characteristics regarded as positive features of technical equipment products.

With our proprietary Exciters, the cerasonar membrane technology is one of the lightweights within the invisible speakers sector. Our entirely invisible loudspeaker concepts, that, for example, present themselves integrated into ceilings and wall panellings, never get whirled through the cabin, even in heavy seas.



cerasonar

for music lovers...



Speaker systems that meet our uncompromising quality standards, can only be manufactured in elaborate handwork. Sound engineers, musicians, physicists – they all are involved in the development of our products. What they all have in common is the passion for perfect sound characteristics. At cerasonar we measure, analyze and meticulously work until each member of the team is thrilled.

Ceratec Audio Design GmbH
Walter-Bertelsmann-Weg
D-27726 Wörpswede
Telefon: +49 (0) 4792 9557080
E-Mail: info@ceratecaudio.de

Handmade in Germany